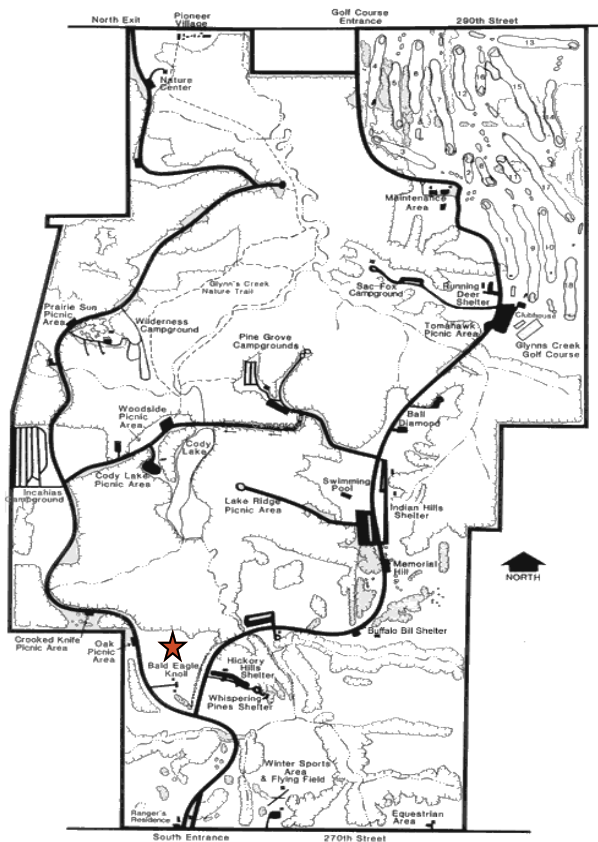


## Directions to Scott County Park

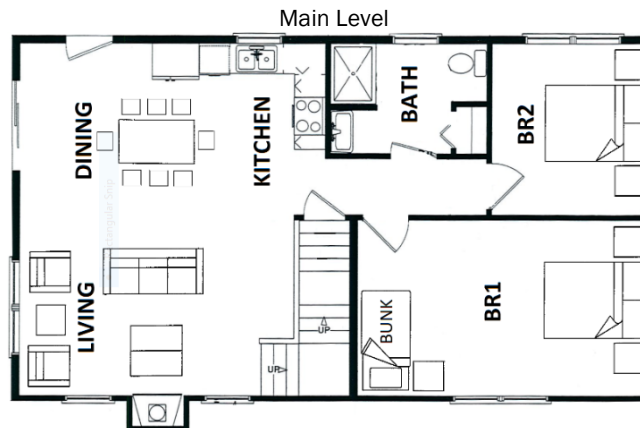
Exit #129 from U.S. 61  
East on 267th Street  
North on Scott Park Road  
East on 270th Street  
Entrance on Left



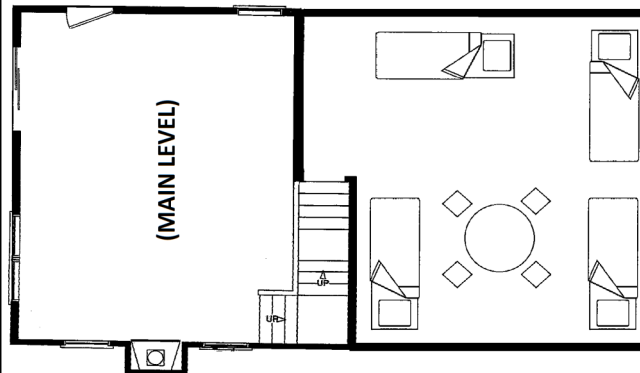
## Map of Scott County Park



## Cabin Layout



Loft Level



**Scott County**  
Conservation  
Board

Scott County Conservation Board Office  
14910—110th Avenue  
Phone: 563-328-3280  
Fax: 563-381-2805  
E-mail: [conservation@scottcountyiowa.gov](mailto:conservation@scottcountyiowa.gov)



## BALD EAGLE LOFT CABIN

Located at:  
Scott County Park  
18850—270th Street  
Eldridge, IA 52748

*For Reservations:*  
**(563) 328-3282 Ext 1**  
[www.scottcountyiowa.gov/conservation](http://www.scottcountyiowa.gov/conservation)



### **BALD EAGLE LOFT CABIN FEATURES:**

- 1484sq. feet of living space (24' x 42' cabin)
- ADA accessible
- Modern bathroom with shower
- Two bedrooms. One with queen and twin-size bunk beds, other with a queen bed only
- Upper level loft space with 4 single beds
- Full Kitchen – stove/oven, microwave, refrigerator, sink, dishwasher, table & 8 chairs with place settings, coffee pot, toaster, pots, pans, and cooking utensils
- Gas fireplace, heat & air conditioning
- Covered porch, picnic table and fire ring
- Vehicle parking for 4 vehicles
- Wireless Internet Access available
- Firewood can be purchased at the park

### **SUPPLIES PROVIDED:**

- Toilet tissue, dish soap, & cleaning supplies
- Broom, dustpan & mop
- Waste baskets and garbage bags

### **RENTER WILL NEED TO BRING:**

- Complete bedding with pillows, sheets, blankets and/or sleeping bags
- Dish cloth and towels
- All food & beverage supplies
- All bath linens and toiletries
- Specialty cooking utensils
- TV, radio, alarm clock (optional)
- Lawn chairs (recommended)



### **RESERVATION INFORMATION:**

**In-Season:** April 1—October 31

**\$190.00** per night or **\$1,140.00** per week

**Off-Season:** November 1—March 31

**\$165.00** per night or **\$990.00** per week

(Payment by cash or credit card only)

- **Refundable Damage/Cleanup Deposit** equal to one night fee due at check-in (credit card only)
- First night fee payable at time of booking, balance due at check-in
- Maximum capacity is ten people



### **CABIN POLICY:**

- Cabins are designed for family usage. No parties, reunions, or large gatherings are allowed, and renter agrees to abide by the Board established maximum cabin capacity.
- A minimum of two consecutive nights rental is required, with a maximum stay of two weeks in a 30 day period.
- Reservations may be made up to a year in advance.
- In addition to the non-refundable Rental Fee, a refundable Damage Deposit is required.
- The cabin is a strictly enforced **NO SMOKING** facility.
- No pets allowed.
- Kegs are not allowed in the cabin areas or in the campgrounds.
- No subletting of cabin permitted.
- No one under 21 years of age is allowed to rent the cabins.
- No tents or campers allowed in cabin area.
- Parking allowed in designated areas only, no roadside parking or parking on the grass.
- Cabin furniture must remain inside the cabin.
- Check In time is 3 – 5 p.m., unless prior arrangements have been made.
- Renter must check-out by 11:00 a.m. on the last day of reservation.
- Failure to follow the Cleanup Guidelines, loss of inventory, or damages to property will result in forfeiture of all or part of the deposit.
- There are **NO REFUNDS** for cancellations or changes. Requests for consideration in the case of emergencies must be made in writing to the Conservation Board.
- Renters and Visitors must comply with Park Hours. All other Scott County Conservation Board park and campground rules apply. Violation of any park rules or regulations may result in fines, use privileges being rescinded, and forfeiture of reservation and/or deposit fees.
- Scott County Conservation Board reserves the right of management staff to enter cabin in an emergency, to inspect, and/or replenish supplies.